

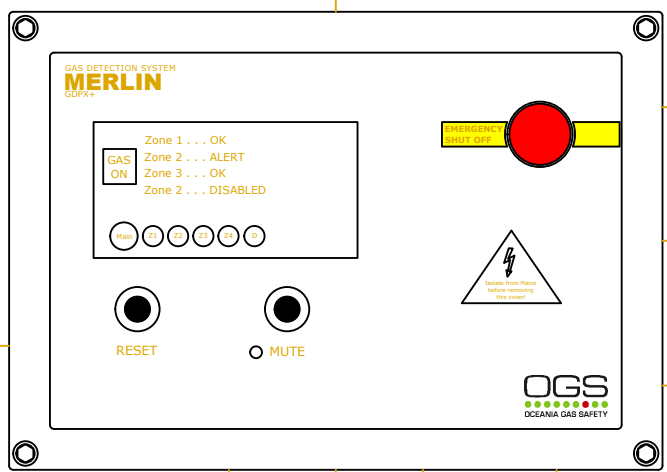
FUSIBLE LINK OVER EACH BOILER

LOW VOLTAGE

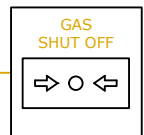


24V DC TO DETECTORS

230V AC SUPPLY



LOW VOLTAGE TO EMERGENCY STOP BUTTON



230V AC TO VALVE



230V AC N/C GAS SOLENOID VALVE

SIGNAL TO TRANSMITTER

LOW VOLTAGE



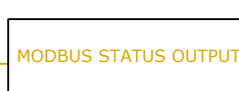
FIRE ALARM

LOW VOLTAGE



BMS STATUS

LOW VOLTAGE



MODBUS STATUS OUTPUT

MERLIN GDPX+ 16 ZONE GAS DETECTION SYSTEM

Drawn by:	Drawing Number:	Date:
Checked by:	Scale:	

